



Fitts-Woolard Hall Information Session

December 3, 2018





Owner

NC STATE



Architecture &
Engineering

CLARK NEXSEN



Construction
Manager

SKANSKA



NC State Alums Contributing to Project

355+

15 Subcontractors or Vendor Managers

19 Design Team Members

321 Donors



227,000 Square Feet

Teaching Labs
Research Labs
Academic Classrooms
Departmental Offices



3

User Groups

1. Edward P. Fitts Department of Industrial and Systems Engineering
2. Department of Civil, Construction, and Environmental Engineering
3. College of Engineering Dean's Administration



Total Project Budget

\$154 M

- >> \$137 M Total Building Cost
- >> \$17 M Utility Plant Expansion



Project Funding Sources

\$75M Connect NC Bond

\$17M NC State Support (Utility Plant Expansion)

\$2M Design Budget

\$47.4M Private Support to-date (12/3)

Total Philanthropy Still Needed \$12.6 M



Total Building Cost

\$137 M

42 Bid Packages

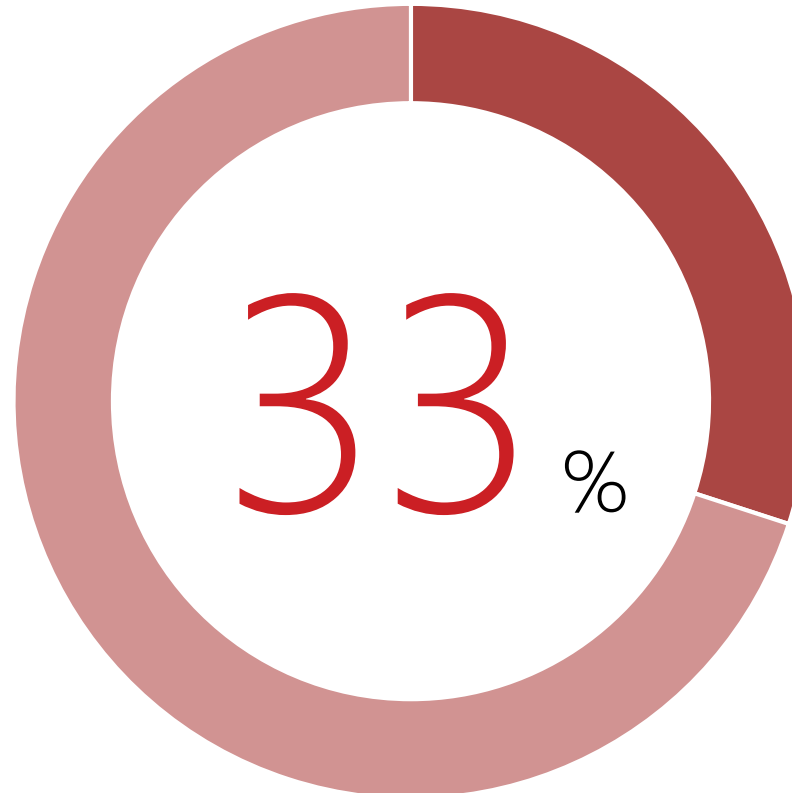
271 Public Pre-qualified Subcontractors

144 Bids Opened

3.4 Average Bids Per Package



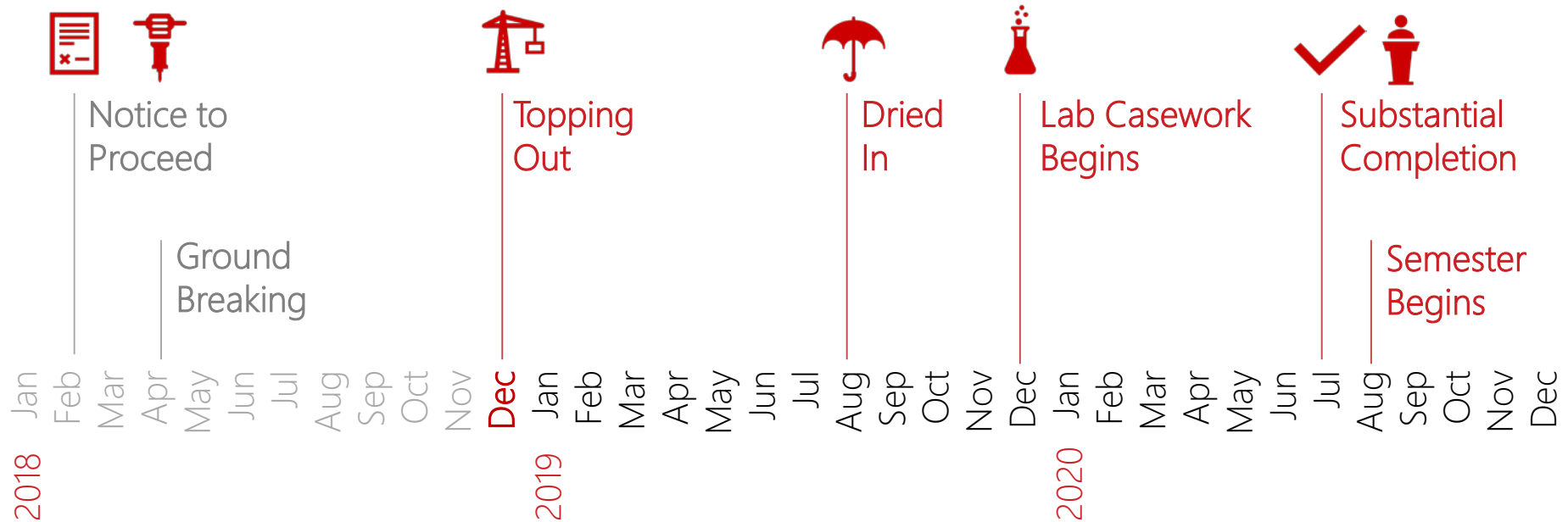
Percent Complete as of
December 2018





Engineering Building Oval

11-18-18





Vision + Guiding Principles



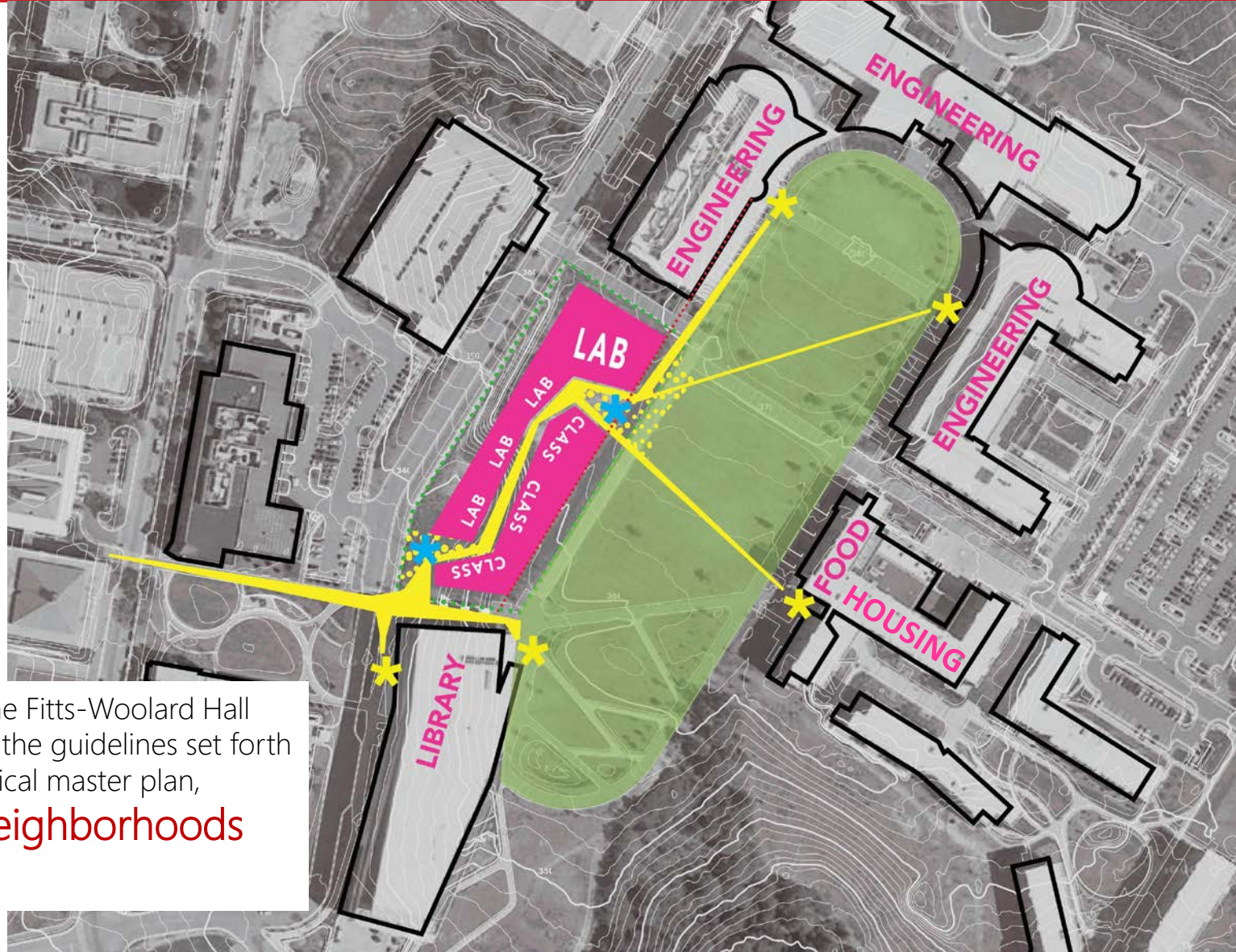
Transcend the Now by creating a place that supports the College of Engineering's continual pursuit of advancing engineering education, conducting breakthrough research, cultivating cross-disciplinary collaboration and launching the next generation of engineering leadership.



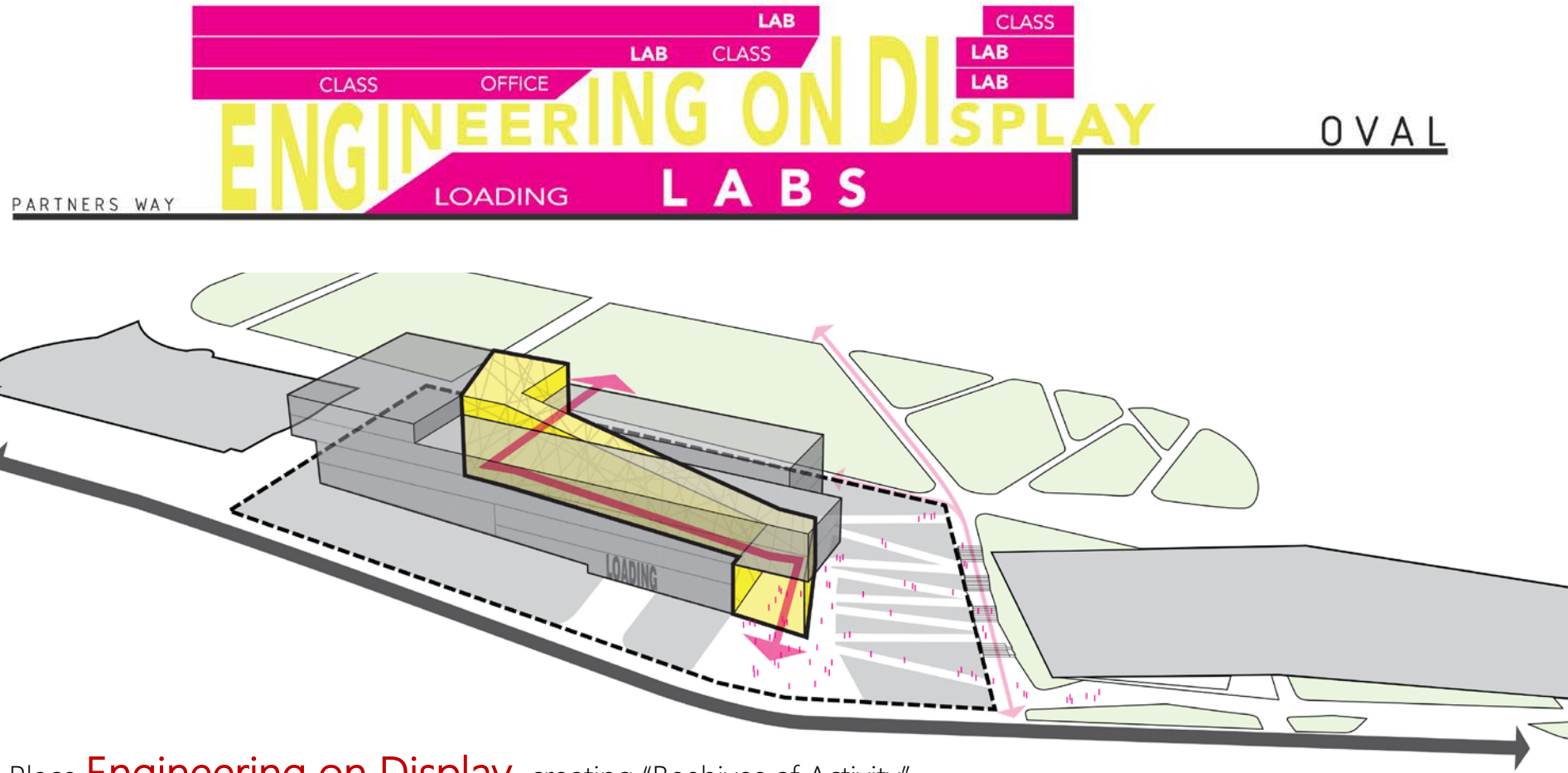
Become the **Embodiment of Think and Do**,
Allowing the College to create the future by providing for new
ways of doing things that are not possible today.



Fitts-Woolard Hall will serve as an **“Architectural Bridge,”** weaving together the existing campus fabric in scale, material and landscape and completing the Oval between Engineering Buildings I, II, III, and Hunt Library.



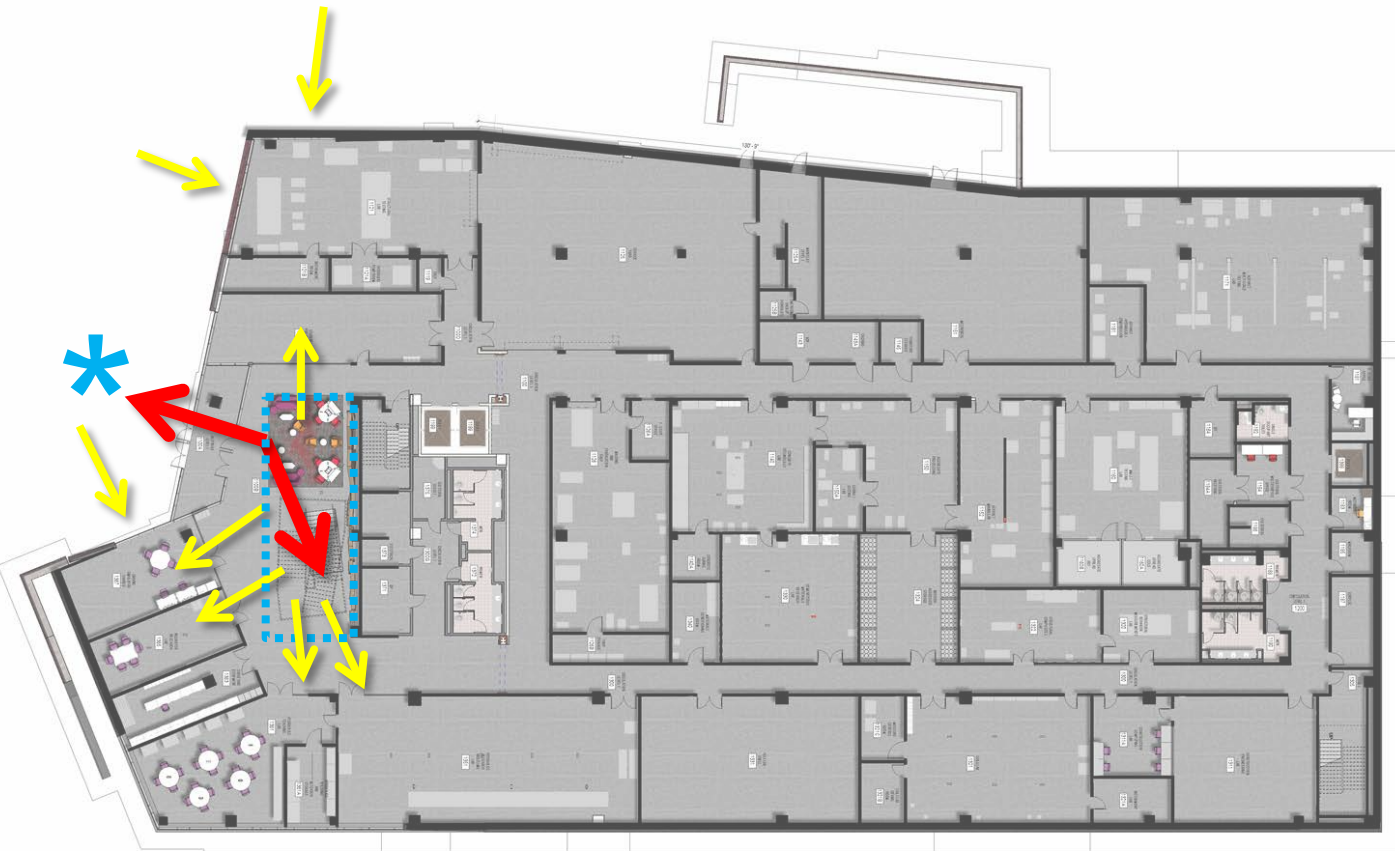
The development of the Fitts-Woolard Hall and Site will adhere to the guidelines set forth in the University's physical master plan, **A Campus of Neighborhoods and Paths.**

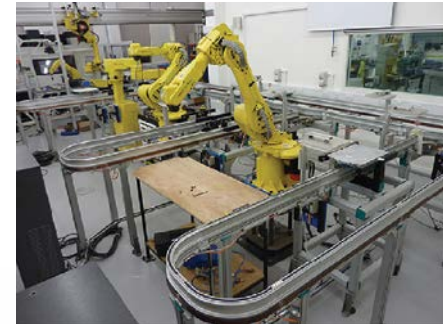
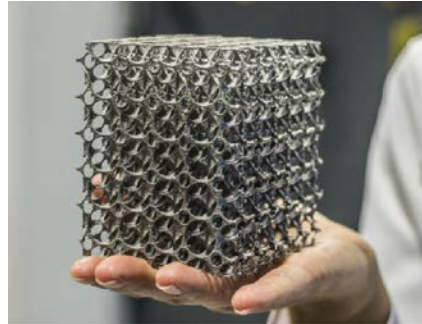
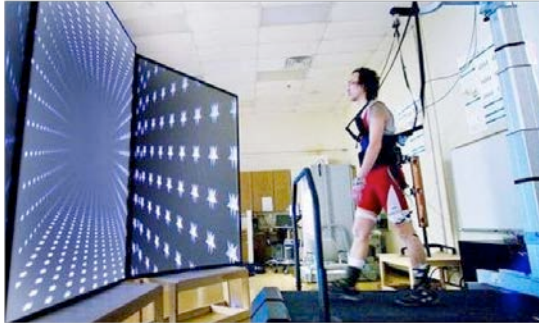


Place **Engineering on Display**, creating “Beehives of Activity” of “hands-on” learning and inquiry that serve to make visible and to celebrate the accomplishments and aspirations of the College.



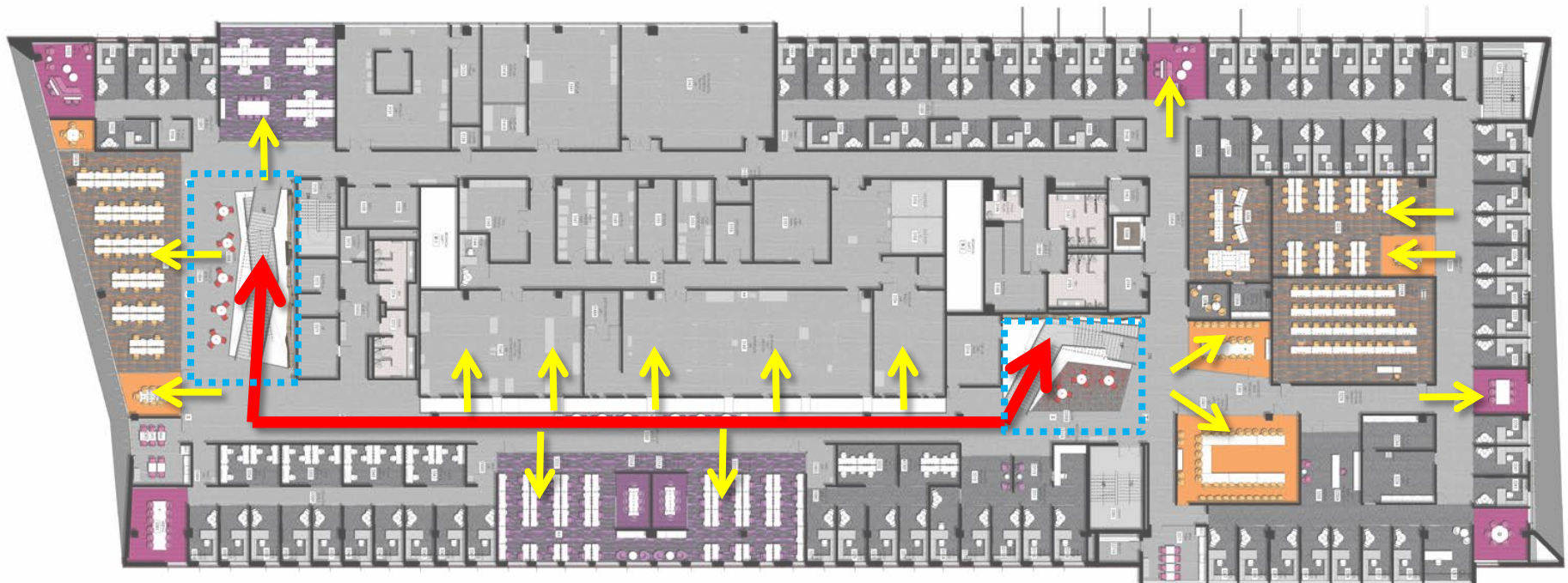
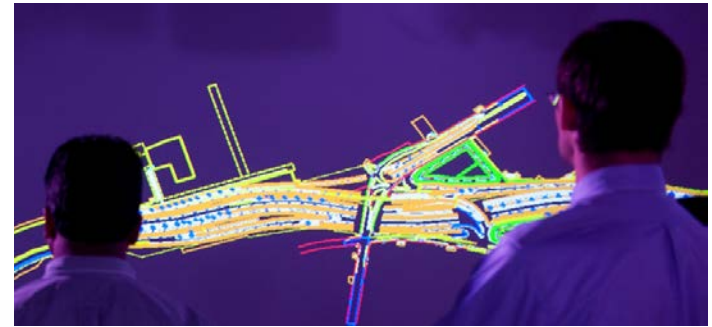
Place **Engineering on Display**, creating “Beehives of Activity” of “hands-on” learning and inquiry that serve to make visible and to celebrate the accomplishments and aspirations of the College.





Engineering on Display Level 2

- Engineering On Display Path
- Views
- Atrium Stairs
- Entry / Plaza



Engineering on Display Level 3

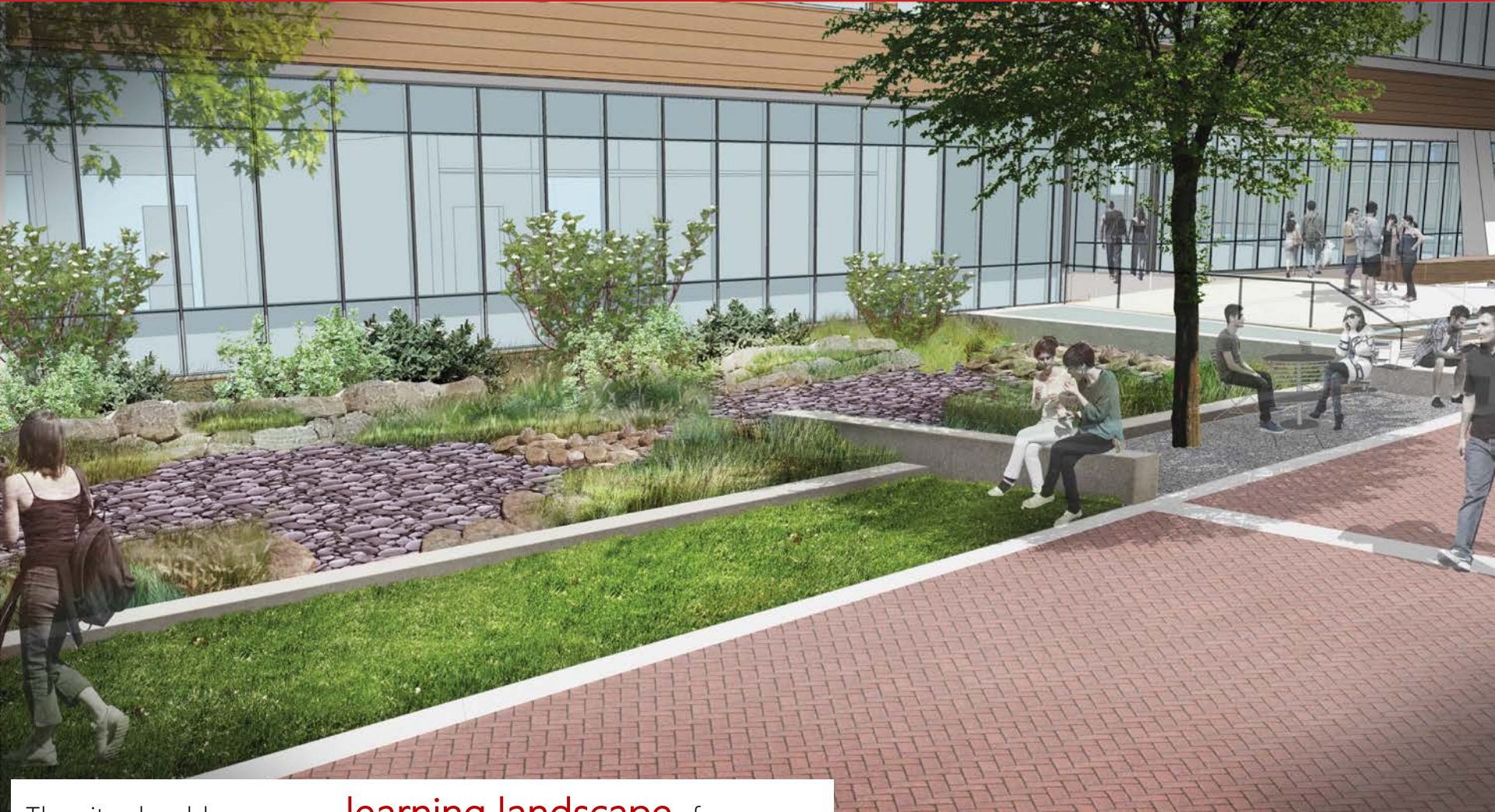
- Engineering On Display Path
- Views
- Atrium Stairs



- Engineering On Display Path
- Views
- Atrium Stairs



Entry to Fitts-Woolard Hall will be from one of two primary points, one at the Northeast end of the site, providing connection near the other College of Engineering buildings, and a second on the Southern end, providing connection from the "All Campus Path."



The site should serve as a **learning landscape**, for example, showcasing the sustainable collection and treatment of storm water and integrating hydrology models for student study.



Promote and Express Sustainability through utilization of "Smart Technology" and the creation of "Robust Building Infrastructure."



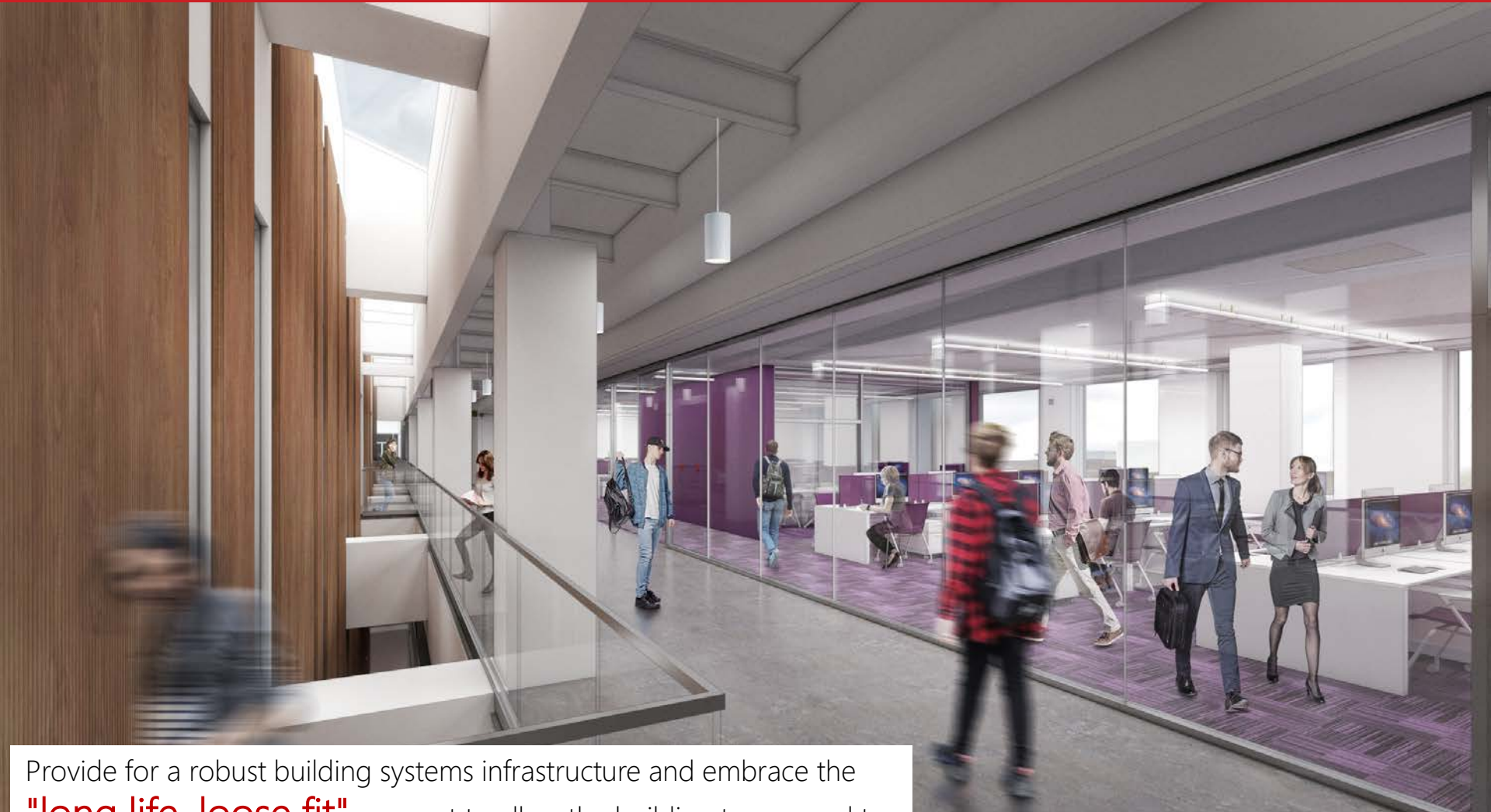
Create a sense of **Community for a Creative Class** of students and faculty within an ecosystem supportive of communal and collaborative engagement as well as the individual and focused.



Interior Spaces that are
"Bright, Airy, Open and Modern"
should "make people smile when they walk in."



The building's organization should provide for **clear and intuitive wayfinding** with transparency revealing the vibrant community of learning and inquiry that resides within the building.



Provide for a robust building systems infrastructure and embrace the **"long life, loose fit"** concept to allow the building to respond to ever changing demands through adaptable, reconfigurable and smart systems of structure, power, ventilation and lab services.



The Architectural Expression should in some way
**reflect the nature of the learning and
research programs** it houses.



Save the Date

Future Fitts-Woolard Hall
Information Session Dates

January

22

7:30 am

March

7

12:00 pm

NC STATE

THINK AND DO
THE
EXTRAORDINARY



The Campaign for NC State